

HIGHWAY 63 FUNCTIONAL PLANNING STUDY FROM TWP RD 642 TO HWY 55

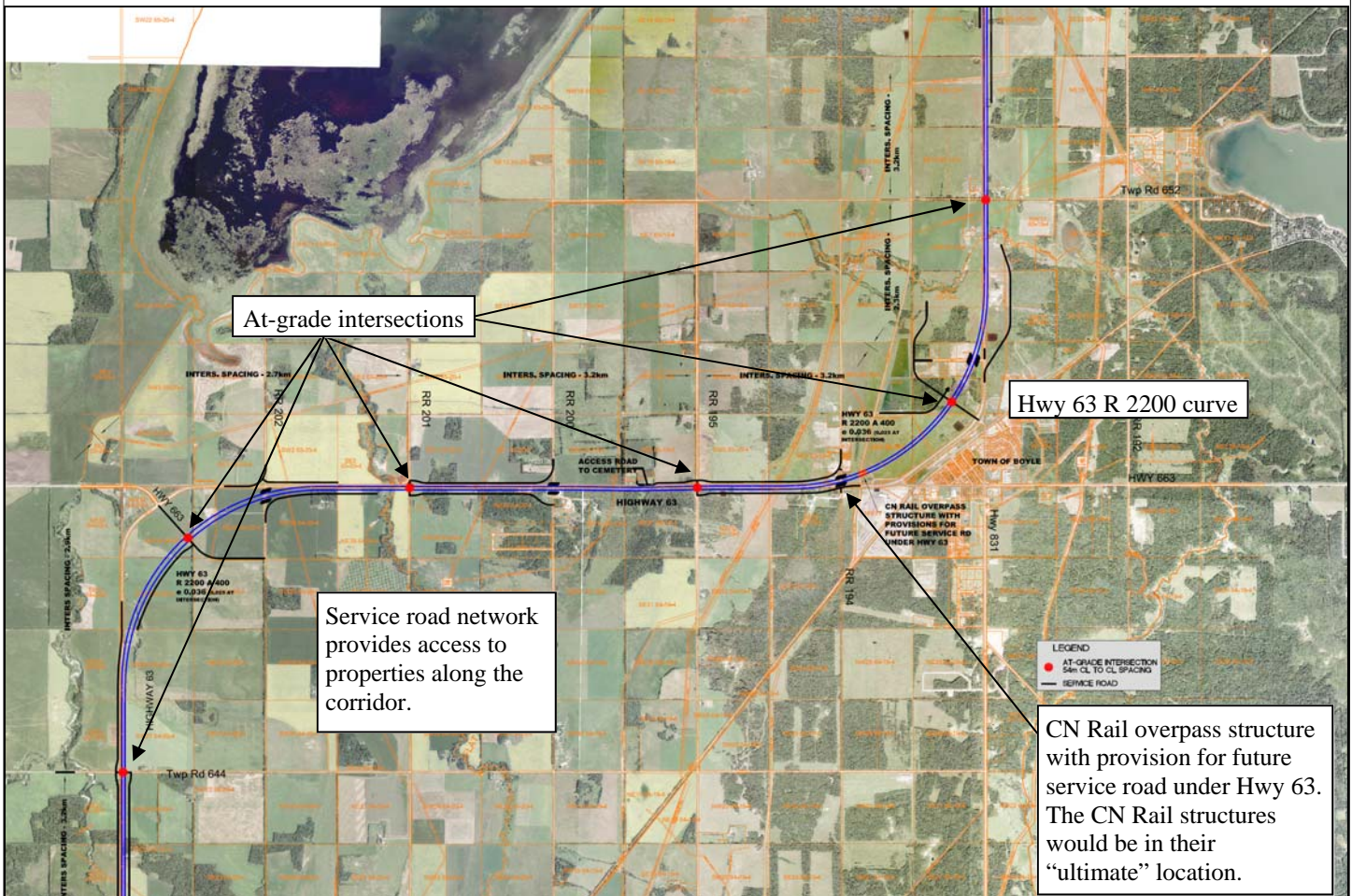
PLANNING PROCESS NEEDS PUBLIC INPUT

BACKGROUND

Alberta Transportation has retained CastleGlenn Consultants Inc. to undertake a functional planning study along the Highway 63 corridor in the vicinity of the Village of Boyle. The general study area extends from the Hwy 63/Twp Rd 642 intersection on the south to the Hwy 63/Hwy 55 intersections on the north. The focus of the second public open house is to present the consultant's preferred alignment illustrating both an "interim" and "ultimate" configuration that would include the location of the future interchange.

INTERIM SOLUTION: EXPRESSWAY STANDARD

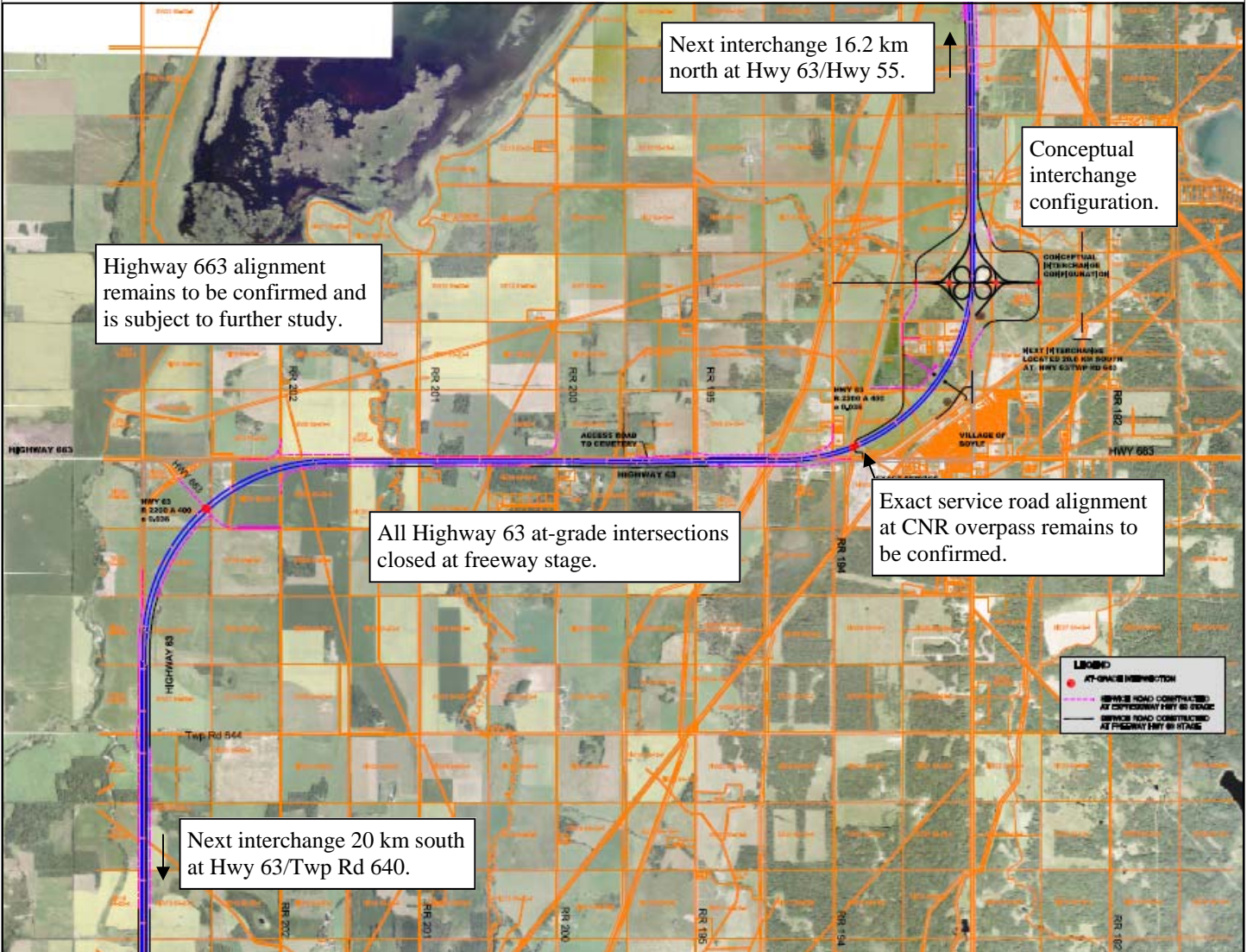
The Consultant's vision for the "interim" stage of improvements involves twinning the Hwy 63 corridor to a 4-lane (*expressway*) standard that would be accessed by several at-grade intersections, spaced approximately 3km apart along the study area's 30 km length. The intersections are intended to integrate with the economic development objectives of the Village of Boyle and the County of Athabasca. Grade-separated structures over the CN Rail corridor would be provided at this stage.



ULTIMATE SOLUTION: FREEWAY STANDARD

The “ultimate” solution is required to accommodate the timeframe when at-grade intersections would no longer function. Access would be provided to the Village of Boyle by a grade-separated interchange to the north of the community.

Hwy 663 would be the subject of additional functional planning. When the Hwy 663 / Hwy 63 intersection would no longer function, an alternate connection to the Hwy 63 corridor and the Village of Boyle would be required.



The results of this functional planning study represent the Consultant’s recommended alignment, which is currently subject to review by representatives from the Village of Boyle, Athabasca County and Alberta Transportation who are members of the study’s Technical Review Committee.

There are no plans for construction of this section of the Hwy 63 corridor at this time.

For more information on this planning study, please contact **Mr. Arthur Gordon**, Consultant Project Manager, **CastleGlenn Consultants Inc.** by phone toll-free at (855) 857-9303, by fax at (403) 252-9331, or by mail at 110/120 1710 Radisson Drive SE, Calgary, Alberta T2A 7E9.